

Quantitative Methods: Student Work

Name: Jodie Richardson
Course: BA Geography

University: University of Liverpool

What was the focus of your project/dissertation?

I completed this work as part of my 2nd year module. My work focussed on the Indices of Multiple Deprivation (IMD) of Merseyside compared with the crime data obtained from the police.uk website. The work relied heavily on quantitative methods.

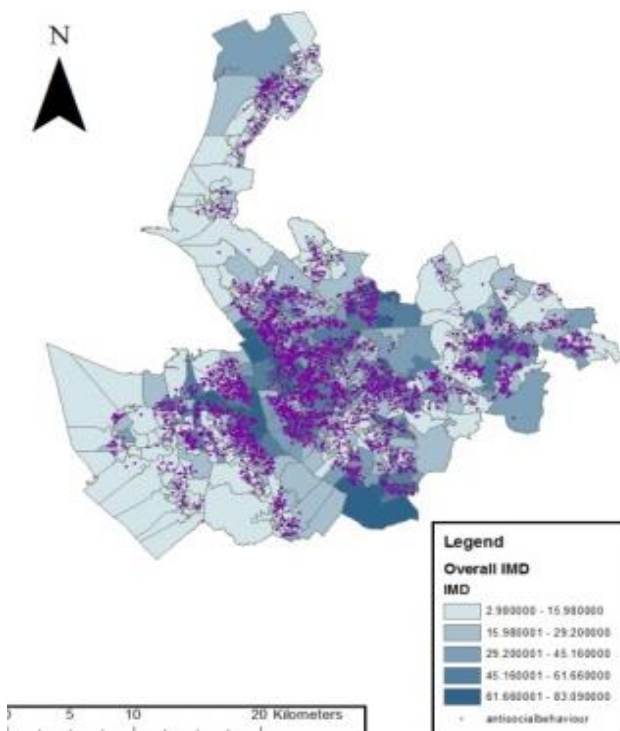
How did you apply Quantitative Methods to your work?

All the data used in the project is secondary, collected from the Government archive and Police.uk. I easily manipulated the data in Excel and also in GIS. This allowed me to create individual maps showing the correlations between two selected variables, for example the overall IMD and anti-social behaviour.

Without the secondary data sets described above none of these further analytic techniques could have been used so limited conclusions would have been made overall.

The main conclusions produced from this work included that anti-social behaviour was the most frequently found crime to be committed in the areas where deprivation was also the highest.

The overall indices of multiple deprivation and Anti-social behaviour across Merseyside in 2010.



Assessors views

Why was this a good piece of work?

- Competent use of appropriate secondary data
- Ability to use GIS to map spatial distribution
- Demonstrated a critical engagement with the data

Feedback:

“Not only did Jodie feel comfortable enough to use secondary data within GIS but she did it at a very high standard. All the maps and the statistics that Jodie presented were appropriate to the actual dissertation question.”